

# SureSan XP dispenser



## Installation Guide

1

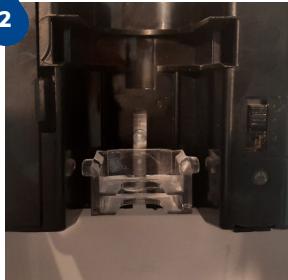


Squeeze the white clips

### Filling the reservoir

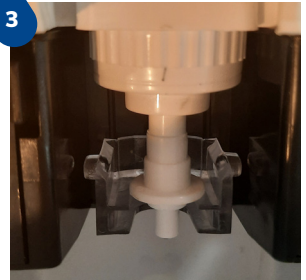
After opening the front by pushing the white button underneath, squeeze the white clips and the reservoir will lift straight out.

2



When putting the reservoir back, please ensure the clear component (above) is pushed down to the bottom of the tracking.

3



Ensure that the ridge on the pump is located on the uppermost ledge, as illustrated above.

4



### Turning it on

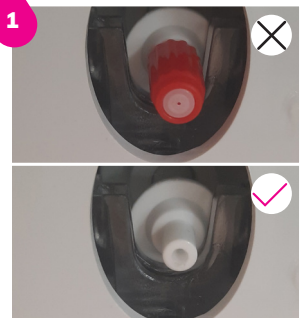
On the switch you will see three grades of settings that correspond to different dosages, to ensure a sufficient dosage for full coverage of your hands we recommend using the number 3 setting

## Ensure efficient flow

Leaving the dispenser vertical for 15 minutes before first use will allow the contents time to move through the pump system ready for dispensing.

To prevent build up of residue in the system, we would suggest removing the reservoir every so often and emptying and rinsing the system with water. This will ensure longevity and sustained efficiency of the product over time.

1



### Soap or gel usage

If you are using the dispenser for gel or soap, we also advise removing the red nozzle, as this may restrict flow of more viscous sanitizers

[www.suresan.com](http://www.suresan.com) | [sales@suresan.com](mailto:sales@suresan.com) | 0333 006 5820

SureSan, Kites Croft Business Park, Fareham, Hampshire PO14 4LW

SureSan is a trading division of SMI Int Group Ltd. Company number: 07644080.